



# G Tower Executive Apartments

**divan** at G TOWER  
residence

  
MARYAPI



## ABOVE ALL EXPECTATIONS

Rising on the top five floors of G Tower, one of Istanbul's new landmark projects by leading developer Mar Yapı, G Tower Executive Apartments is designed to fulfill even the highest of expectations both for its guests and investors.

The exceptional living quarters on a total of 72.000 m<sup>2</sup> will be managed by Divan, Turkey's leading brand in hospitality industry and will serve as upscale hotel apartments for privileged guests. On the main road of Basın Express, the project stands on the crossroads of major highways and with a direct connection to the metro line, it offers unrivalled transportation advantages.

G Tower Executive Apartments combines exceptional services and facilities of a luxurious hotel with the comfort and privileges of a high-end apartment. Outdoor and indoor swimming pools, a fully equipped gym, a spa and well thought common areas both for work and leisure will be available for the guests of G Tower Executive Apartments along with a full concierge service.

With a guaranteed rental income of 3 years, G Tower Executive Apartments offer an exceptional opportunity. The investors of the project will not only become the landlords of an income guaranteed property, but also will be welcome to enjoy the great city of Istanbul, for a total of 15 days\* every year, with privileges of staying in their own hotel apartments.

\*The property owners may preserve G Tower Executive Apartments for a period of non-consecutive 2 weeks, annually.





## A SUPERIOR VIEW

Designed by the world renowned architects of RMJM, G Tower Executive Apartments offer unique design elements that are rarely found on other high rise buildings of this size.

The balconies of G Tower Executive Apartments makes it possible to enjoy a great view of the city in fresh air and creates a greener appearance for the building exterior with the carefully selected decorative plants that adorn the open areas throughout the building.







## HIGH STANDARDS

Designed by world renowned RMJM architects, G Tower collaborates with Divan, Turkey's leading brand in hospitality industry, on creating the unique life style concept of Divan Residence at G Tower. High above the top floors of the Divan Residence at G Tower, stands the G Tower Executive Apartments, which will also be managed by the experienced staff of Divan.

G Tower Executive Apartments will elevate even the highest standards to a new level. The luxury hotel apartments will be the ultimate destination for the world's elite, with its exceptional services and spacious living quarters that combine the privileges of an exclusive hotel with an impeccably designed apartment.





## HEAD OVER CLOUDS

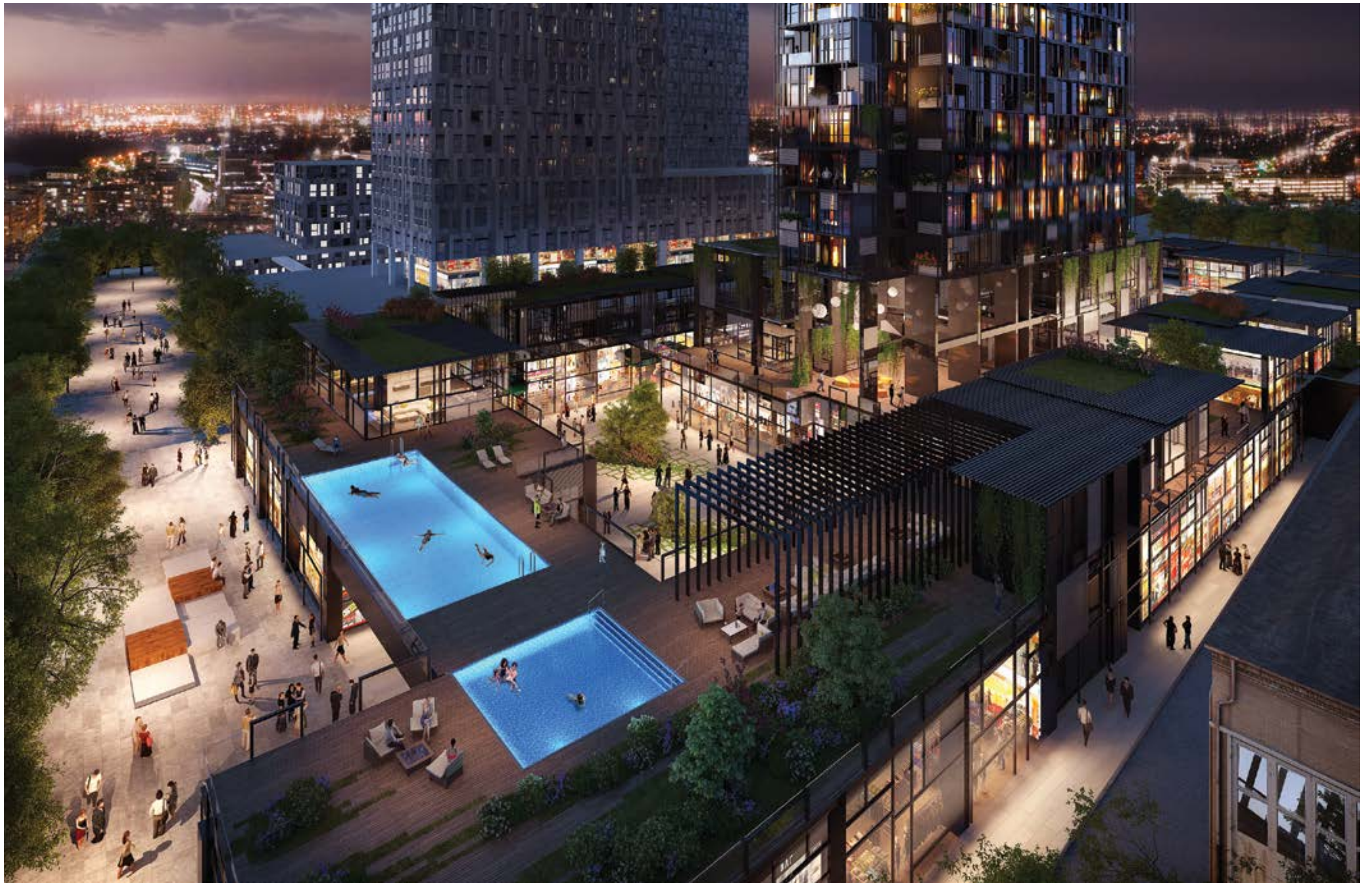
**Designed by the world renowned architects of RMJM, managed by Divan, the ultimate brand in hospitality industry, G Tower Executive Apartments brings luxury to a new level.**

**Concierge services, spa, access to outdoor and indoor pools, a fully equipped gym and well thought common areas, including an office space and a social center.**

**Rarely found exterior design elements on high rise buildings, such as balconies, give the structure a unique superiority.**

**G Tower Executive Apartments is a luxurious hotel, combined with impeccably designed modern apartments. A variety of 1+1, 2+1, 1+1,5 hotel apartments to choose among. A unique investment opportunity with guaranteed rental income of 3 years.**







## THE URBAN GETAWAY

G Tower Executive Apartments is located in Gunesli, a fast developing neighbourhood with modern and upscale projects. On the main road of Basın Ekspres and among the major highways, G Tower Executive Apartments offer convenient and effortless transportation alternatives both for business meetings and touristic visits. The building also has a direct connection to the metro line, making it possible to enjoy the city without the traffic.



\* Travel time estimation for vehicle transport is based on after hours traffic.

G Tower Executive Apartments, overlooking the city from above, create an urban haven for its guests. The brand-new landmark project will become the ultimate destination for leisure and business seekers alike.

## EXCEPTIONAL PARTNERS FOR EXCEPTIONAL PROJECTS

Mar Yapı brings landmark projects to life, in collaboration with the world's greatest architects and designers. This vision of perfection is also seen through the company's management agreements with leading brands of the market.

Mar Yapı once again collaborates with Divan on its latest project G Tower Executive Apartments. As well as being the leading hotel chain in Turkey, Divan has also become the ultimate luxury brand along with its branches in gastronomy since 1956.

First Divan Residence came to life with G Plus by Mar Yapı. The two leading companies once again signed a management agreement for G Marin Project.

G Tower Divan Residence is the third collaboration with the brand. G Tower Executive Apartments will also be managed by the experienced team of Divan, offering traditional Divan hospitality with exceptional services of gastronomy and professional concierge.

  
MARYAPI

divan  
residence

at G TOWER



## AN ELEVATED SENSE OF DESIGN

A subtle palette of colours carefully combined to create an atmosphere of comfort and elegance. High quality furniture stands out on well made parquet flooring. The oak panelled walls are adorned with bespoke works of art. Bathrooms stand out with natural stone tiles. The exceptionally well designed quarters of G Tower Executive Apartments enjoy sunlight during the day and adorns a peaceful shade with a sublime lighting design during the night.

















## A PERFECT DAY IN ISTANBUL, BEGINS AT G TOWER EXECUTIVE



### **Divan Brasserie**

Start your day with a deliciously rich breakfast at Divan Brasserie, right in your building.



### **Atatürk Forest & Yesilkoy**

If you prefer a little escape from the city, we recommend a day at Ataturk Forest, especially if it is the tulip season. Yesilkoy is close by with a nice scenery of old houses and a wide range of restaurants.



### **Prince Islands**

If you are up for an adventure you can take the ferry to the Prince Islands and have lunch over Buyuk Ada, while enjoying a unique atmosphere that will take you back in time. and a wide range of restaurants.



### **Grand Bazaar**

You may explore the Grand Bazaar and have your afternoon coffee in one of the traditional cafes.



### **G Tower Executive B Spa**

After a whole day in the city, the best place to be is the B Spa, back in G Tower Executive Apartments.



### **G Tower Executive Restaurants**

Leaving the spa all refreshed, you may choose among the selection of restaurants in the building. When you're finally back in the confinement of your own residence, enjoy the city lights with a last drink on your balcony.



## THE UPWARD TREND

As one of the leading destinations in the world, Istanbul offers a rapid income growth for real estate investors.

3% annual increase in residential prices goes up to 25% for new condominiums (2018 Q1).

Becoming a major business hub with finance and trade fairs, the city promises further growth for the real estate market in the future.

The grant of Turkish Citizenship is another opportunity for international buyers, whether they would like to become residents with citizen privileges or landlords with a promising rental income.

Mar Yapı offers a guaranteed revenue income for G Tower Executive Apartments for 3 years, making the property one of the most profitable investments in Istanbul.

## A WARM WELCOME

**Welcoming all cultures and nationalities, Turkey has always been an ideal country for global investors. Now, Turkey presents the ultimate opportunity of Turkish Citizenship. G Tower Executive Apartments present an unparalleled return on investment for distinguished investors on the path to citizenship.**





## UNIT PLANS

## RESIDENCES

G Tower Executive Apartments welcome you to a brand-new concept of high-end living with its exceptionally well designed quarters, overlooking an impressive view, just above the clouds.

Residence 1+1A (NE)	82.45 m <sup>2</sup>
Residence 1+1A (SW)	80.55 m <sup>2</sup>
Residence 1+1B	78.80 m <sup>2</sup>
Residence 1+1C	65.80 m <sup>2</sup>
Residence 1+1D	83.77 m <sup>2</sup>
Residence 1+1E	78.28 m <sup>2</sup>
Residence 2+1	116 m <sup>2</sup>
Residence 1+1,5	83.45 m <sup>2</sup>



## RESIDENCE 1+1A (NE)



Entrance & Corridor	5.47 m <sup>2</sup>
Kitchen	9.95 m <sup>2</sup>
Living room	17.20 m <sup>2</sup>
Bedroom	10.04 m <sup>2</sup>
Bathroom	2.95 m <sup>2</sup>
Balcony	5.40 m <sup>2</sup>
Storage	4.00 m <sup>2</sup>
<b>Gross floor area</b>	<b>82.45 m<sup>2</sup></b>

30

## RESIDENCE 1+1A (SW)



Entrance & Corridor	4.35 m <sup>2</sup>
Kitchen	9.94 m <sup>2</sup>
Living room	17.03 m <sup>2</sup>
Bedroom	10.04 m <sup>2</sup>
Bathroom	2.95 m <sup>2</sup>
Balcony	5.40 m <sup>2</sup>
Storage	4.00 m <sup>2</sup>
<b>Gross floor area</b>	<b>80.55 m<sup>2</sup></b>

31



## RESIDENCE 1+1B



Entrance & Corridor	5.67 m <sup>2</sup>
Kitchen & Living room	23.69 m <sup>2</sup>
Bedroom	12.05 m <sup>2</sup>
Bathroom	4.59 m <sup>2</sup>
Balcony	2.88 m <sup>2</sup>
Storage	4.00 m <sup>2</sup>
<b>Gross floor area</b>	<b>78.80 m<sup>2</sup></b>

## RESIDENCE 1+1C



Kitchen & Living room	21.95 m <sup>2</sup>
Bedroom	11.54 m <sup>2</sup>
Bathroom	3.80 m <sup>2</sup>
Balcony	2.78 m <sup>2</sup>
Storage	4.00 m <sup>2</sup>
<b>Gross floor area</b>	<b>65.80 m<sup>2</sup></b>



## RESIDENCE 1+1D



Entrance	3.05 m <sup>2</sup>
Corridor	2.08 m <sup>2</sup>
Kitchen & Living room	24.86 m <sup>2</sup>
Bedroom	12.08 m <sup>2</sup>
Bathroom	5.36 m <sup>2</sup>
Balcony	4.28 m <sup>2</sup>
Storage	4.00 m <sup>2</sup>
<b>Gross floor area</b>	<b>83.77 m<sup>2</sup></b>

## RESIDENCE 1+1E



Entrance & Corridor	5.63 m <sup>2</sup>
Kitchen & Living room	23.72 m <sup>2</sup>
Bedroom	11.89 m <sup>2</sup>
Bathroom	4.26 m <sup>2</sup>
Balcony	2.88 m <sup>2</sup>
Storage	4.00 m <sup>2</sup>
<b>Gross floor area</b>	<b>78.28 m<sup>2</sup></b>



## RESIDENCE 2+1



Entrance	5.29 m <sup>2</sup>
Corridor	3.73 m <sup>2</sup>
Kitchen & Living room	30.17 m <sup>2</sup>
Bedroom	12.10 m <sup>2</sup>
Bedroom	11.61 m <sup>2</sup>
Bathroom	3.86 m <sup>2</sup>
Balcony	4.43 m <sup>2</sup>
Storage	6.00 m <sup>2</sup>
<b>Gross floor area</b>	<b>116 m<sup>2</sup></b>

36

## RESIDENCE 1+1,5



Corridor	6.58 m <sup>2</sup>
Kitchen & Living room	20.67 m <sup>2</sup>
Bedroom	8.58 m <sup>2</sup>
Room	5.59 m <sup>2</sup>
Bathroom	5.24 m <sup>2</sup>
Balcony	4.39 m <sup>2</sup>
Storage	5.00 m <sup>2</sup>
<b>Gross floor area</b>	<b>83.45 m<sup>2</sup></b>

37



## UP AND AROUND

G Tower Executive Apartments stand above, not just a building but as a center of social life.

A fully equipped gym with professional trainers is situated in the complex along with swimming pools and a great spa. Well designed common areas include a shared office that will make it possible to manage business chores without leaving the premises. A selection of casual and upscale restaurants, shops and outdoor areas are also among the facilities.

G Tower Executive Apartments create an urban haven right in the city, where you can enjoy every convenience without even leaving the premises. Moreover, a professional concierge service is also available for those who would like to explore the city.





## ABOUT THE ARCHITECT RMJM

Over the last 60 years, RMJM has worked to revolutionise the real estate industry. Through consistently adapting to the market changes and shifting social demographics, RMJM became one of the largest and most geographically diverse architecture firms in the world.

Today, RMJM is working with 2000 people, in its offices over five continents. The key to RMJM's success is the product of their sensibility to the culture of the country in which their projects are based. Their vision is to shape architecture everywhere in the world through sustainable, quality designs that will stand the test of time and deliver holistic value to its clients.





## ABOUT THE DEVELOPER MARYAPI

Established in 2006, Mar Yapı has become one of the leading residential developers in Istanbul with its benchmark projects. The enhanced investor value of Mar Yapı comes from its dynamic approach that collaborates with the world's greatest minds in architecture and design.

With a slate of architectural awards, Mar Yapı is differentiated through its exceptional focus on quality and a keen sense of environmental consciousness. Mar Yapı approaches its mission of "realization of perfection" through each extraordinary project.



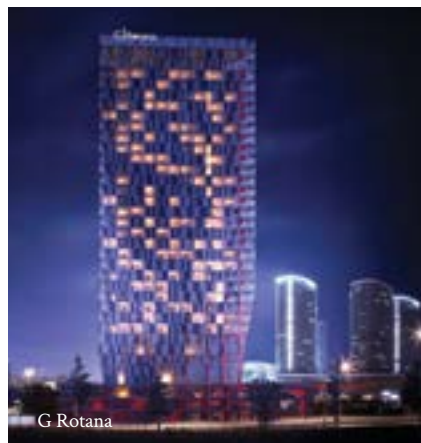
G Hub



G Yoo



G Plus Divan Residence



G Rotana



G Tower



G Marin



G Beyond

# CONTACT US

**G Tower Executive Apartments team would be glad to help you with your inquiries. Please feel free to contact us.**

**G Tower Executive Apartments  
Istanbul Sales Office:**

**Phone: +905443065128**

**[www.shivarhome.ir](http://www.shivarhome.ir)  
[info@shivar.org](mailto:info@shivar.org)**

The layout details, amenities and facilities mentioned/shown are subject to changes/relocation within the composite development/are subject to modification, amendment, changes and revocable, without any notice, at the discretion of the Developer. Any location plans given are only indicative in nature and may not depict actual locations. The plans are subject to approval and confirmation by relevant authorities. Changes may therefore be affected in the plans as may be required/suggested by relevant statutory authorities, and such changes will be duly intimated to the purchasers. Marble and granite are natural stone materials containing veins with tonality differences. There will be colour and marking caused by their complex mineral composition and incorporated impurities. Where warranties are given by manufacturers and/or suppliers of the above installations, the vendor shall assign the purchasers such warranties at the time the possession of the unit is delivered to the purchasers. Provided always that the vendor shall not be liable nor be answerable or responsible to the purchaser for any failure on the part of the manufacturers and/or contractors and/or suppliers to maintain or repair any defects occurring thereto.